



Special Precast Products

Specialty precast products as an alternative to cast-in-place concrete elements can be utilized with Reinforced Earth® and TechSpan® products. With these solutions, efficient rapid installation and an overall aesthetic end result can be ensured.



Precast Products

Our success in designing and supplying traditional precast core elements for a variety of retaining wall solutions, namely Reinforced Earth® and precast arch structures namely TechSpan® has led us to develop a range of supplementary precast elements for the most iconic infrastructure projects across Canada. Precast concrete solutions have become the preferred product for planners and builders as opposed to cast-in-place solutions.

We offer the following types of precast supplementary elements for Reinforced Earth and TechSpan solutions:

	Page
Precast Traffic Barriers	2
Precast Coping Solutions	3
Precast Leveling Pads	4
TechSpan Precast Collars and Footings	4
Customized Precast Products on Request	5

Custom precast traffic barriers and copings can add an architectural element to your project while still providing all the benefits of precast concrete on the job site.



Advantages of Precast Products:

- Rapid and efficient installation
- Reduce or eliminate cast-in-place concrete
- Eliminate the need for over-hang formwork
- Can be used if cast-in-place concrete formwork along the top of a wall is not feasible
- Hide the top edges of panels
- Create a complex aesthetic design



Professional Services from Reinforced Earth Company Ltd. (RECo)

Reinforced Earth Company Ltd., established in Canada in 1970, offers one-source design and supply services from our on-staff Professional Engineers. Full design and product liability insurance is provided on all projects.

Design Services

- Feasibility studies
- Written estimates
- Drawings

Construction Services

- Construction drawings
- Timely delivery to site
- On-site guidance

Consultation Services

- Available anytime from our on-staff professional engineers

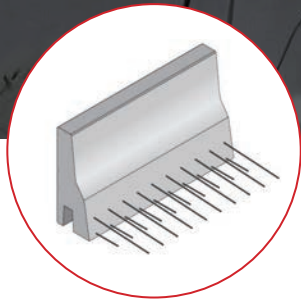
Precast Traffic Barriers



This crash test was conducted by Texas A&M University and Texas A&M Transportation Institute to test potential barriers.

Precast traffic barriers are a safety solution for retaining walls with vehicular traffic on top. It allows a contractor to set precast barrier units along the top of the wall, greatly reducing the use of cast-in-place concrete. The barrier units are designed to rest atop the retaining wall and are delivered to the site with protruding dowels to tie into the cast-in-place moment slab.

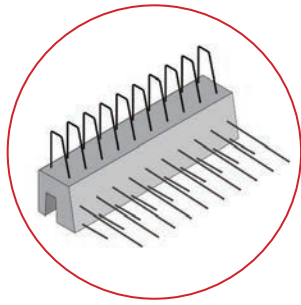
Special barrier units can be designed to accommodate light poles, electrical conduits, drainage inlets, sound wall posts, sign structures, guide rail transition barriers, bridge approach slabs, tight curves, and other unique geometry in the barrier's alignment.



Complete Vertical Barrier

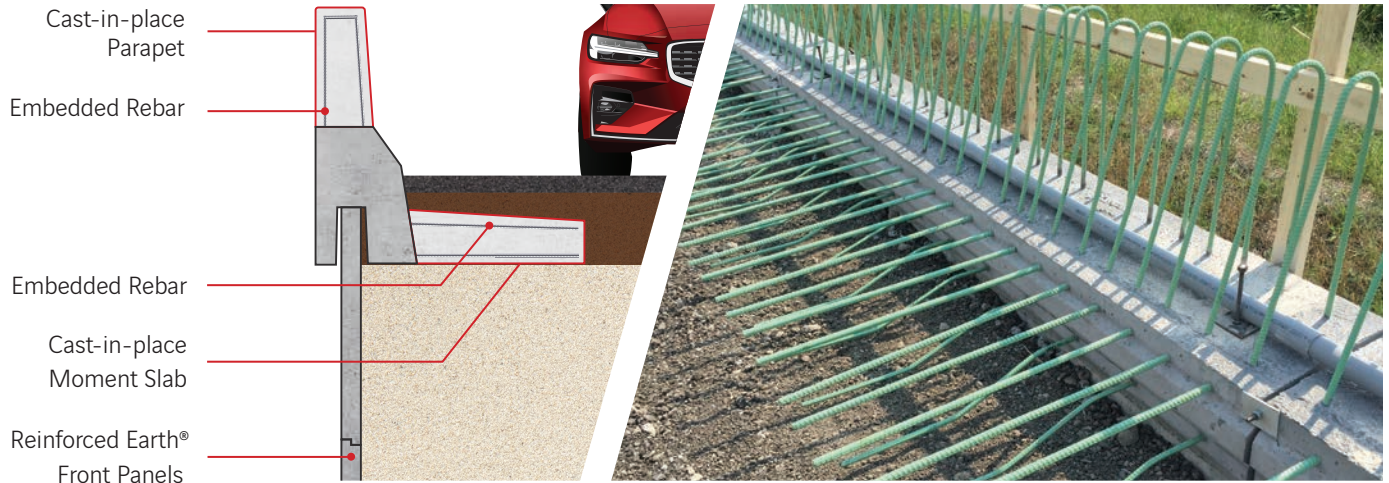
The entire unit is precast and gets tied into the cast-in-place moment slab with the embedded rebar.



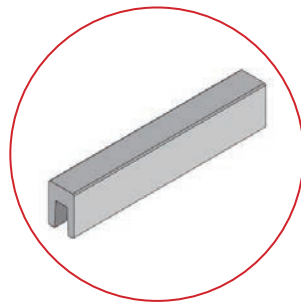


Half Connector

It is just like a precast coping but with embedded rebars on the top for a cast-in-place parapet and embedded rebars on the back for the cast-in-place moment slab.



Precast Coping Solutions

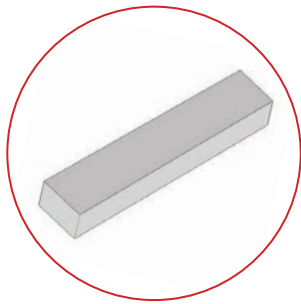


Precast coping is a solution for applying a uniform appearance along the top of a retaining wall, hiding the top edge of facing panels. It allows a contractor to set coping units along the top of the wall, greatly reducing the use of cast-in-place concrete. The coping units are designed to rest atop the retaining wall stabilized by their own weight. A moment slab or mechanical connection can be used for additional stability if needed.

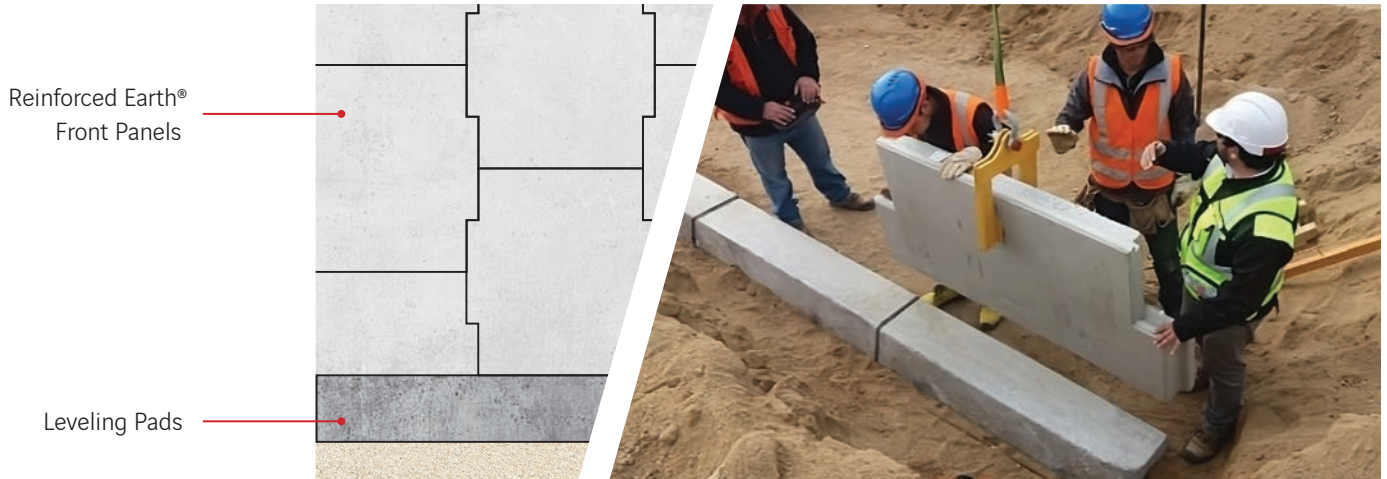
Special coping units can be designed to accommodate pedestrian railing, fence posts, light poles, drainage inlets, drainage ditches, and other odd geometry in the wall's alignment.



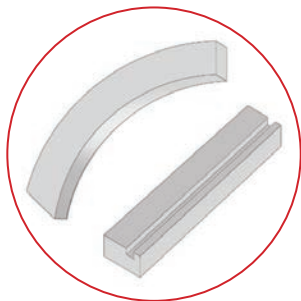
Precast Leveling Pads



Precast leveling pads are an easy and quick way to create a base for our Reinforced Earth front panels. They are a great alternative for cast-in-place base solutions. Better base preparation incorporated with a precast leveling pad ensures easier construction and an overall better product. Our precast leveling pads are 300 mm x 150 mm in size and are designed to be placed under Reinforced Earth panels in order to level them out.

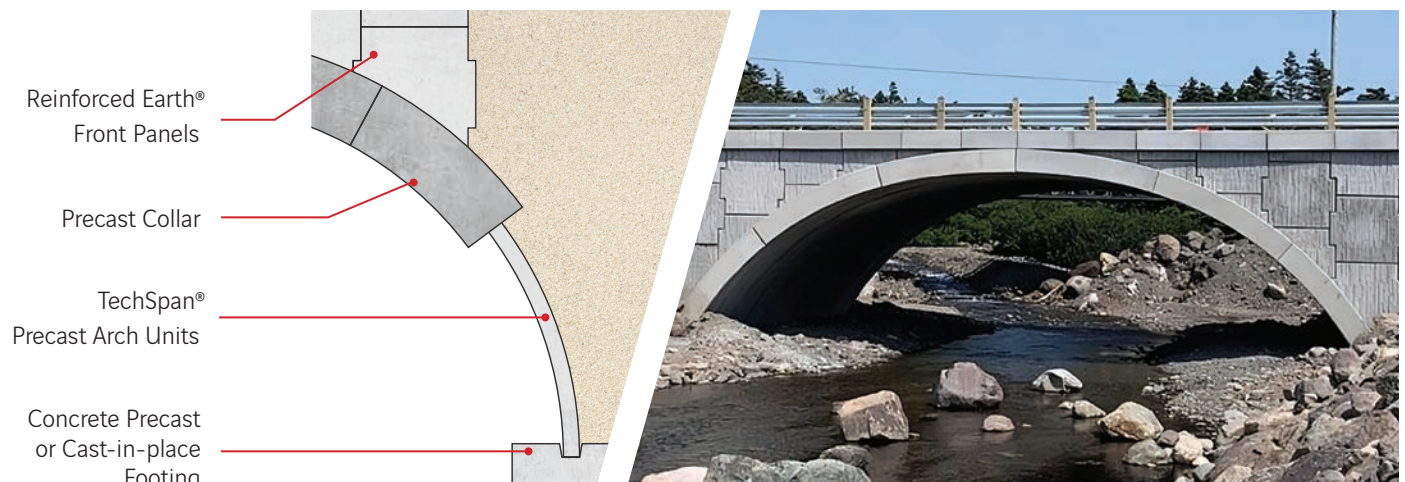


TechSpan Precast Collars and Footings



Our precast collars are custom-made for each TechSpan project and these collars cover the outer edge of TechSpan tunnels creating a uniform aesthetic look.

Precast footings are a great alternative for cast-in-place footings for TechSpan projects ensuring an easy and quick way to create a base for TechSpan arches.



Customized Precast Products

At RECo, we offer customized precast products where required. These special products are based on the specific requirements of the planner or the builder. Each customization is designed to fit each project.

Custom designed traffic barrier which are precast and delivered to the job site for rapid installation.



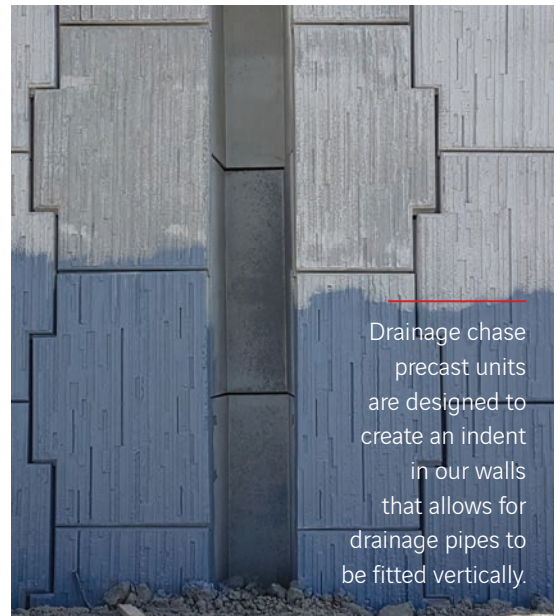
Retain earth in style with architectural finishes.

We are able to provide an array of customizations including but not limited to:

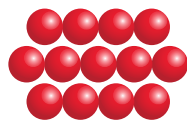
- Tall Copings
- Angled Copings
- Sound Absorption Panels
- Architectural Finish Front Facing Panels
- Architectural Finish on Barriers
- Façade Panels **and many more**



Photograph of a TechSpan precast arch with integrated collar and precast footing.



Drainage chase precast units are designed to create an indent in our walls that allows for drainage pipes to be fitted vertically.



REINFORCED eARTH
since 1970



To contact a regional manager and learn more about RECo products and services please visit reinforcedearth.ca/contact

Reinforced Earth Company Ltd. | 5090 Explorer Drive, Suite 400, Mississauga, ON L4W 4T9 | TEL: +1 (905) 564-0896

© 2023 Reinforced Earth Company Ltd. –The text, photos and other information contained in this catalogue are the property of the Reinforced Earth Company Ltd. Any reproduction, display or other use without the prior consent of Reinforced Earth Company Ltd. is prohibited. Reinforced Earth® and TechSpan® are registered trademarks of Terre Armée Group and the individual companies of the group.